



# Bellringer:

How might friendship between people in power reshape our communities?

Describe any examples you can think of.



# From Letters to Laws:

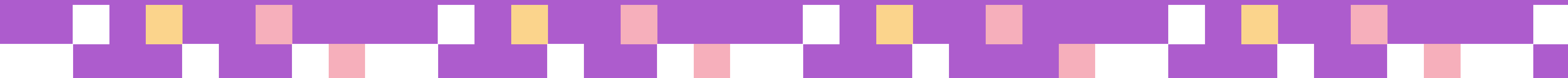
## The Power of Friendship in Shaping America's Legislation

# ESSENTIAL QUESTIONS

How do friendship & community shape social and political movements?

What strategies did these four women use to drive change, & how did their identities impact their work?

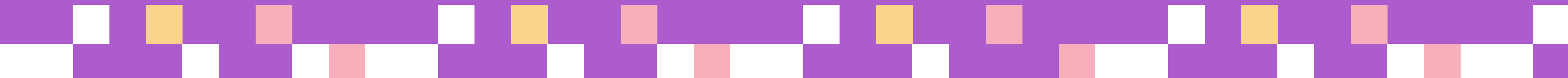
How can we apply the lessons from their lives to promote equity and justice today?



## Directions:

1. Choose one changemaker to focus on.
2. Consider the photo, symbol, and personal quote.
3. Based on the information given, answer the following questions:

- What issue/social cause seems most important to this person? Why?
- What challenges do you think they might have faced? Why?



# Pauli Murray

"Hope is a song in a weary throat."





# Eleanor Roosevelt

"When will our consciences grow so tender that we will act to prevent human misery rather than avenge it?"





# Patricia Roberts Harris

"If my life has any meaning at all, it is that those who start out as outcasts may end up being part of the system."



Copyright United States Postal Service. All rights reserved.





# Ruth Bader Ginsburg

"Fight for the things  
that you care about,  
but do it in a way that  
will lead others to  
join you."



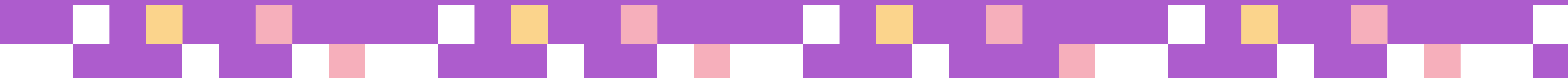


# TURN & TALK:

What needs to change to make the world a better place?

What is one thing you wish were different in your school, neighborhood, or the world?

What challenges do you think you might face in trying to make these changes?



Pauli Murray was breaking barriers from a young age. Held back by what Murray dubbed “Jane Crow,” s/he\* was a staunch advocate for the rights of women and people of color and fought tirelessly for civil rights. As a poet, writer, activist, organizer, legal theorist, and priest, Murray was directly involved in, and helped articulate, the intellectual foundations of two of the most important social justice movements of the twentieth century.

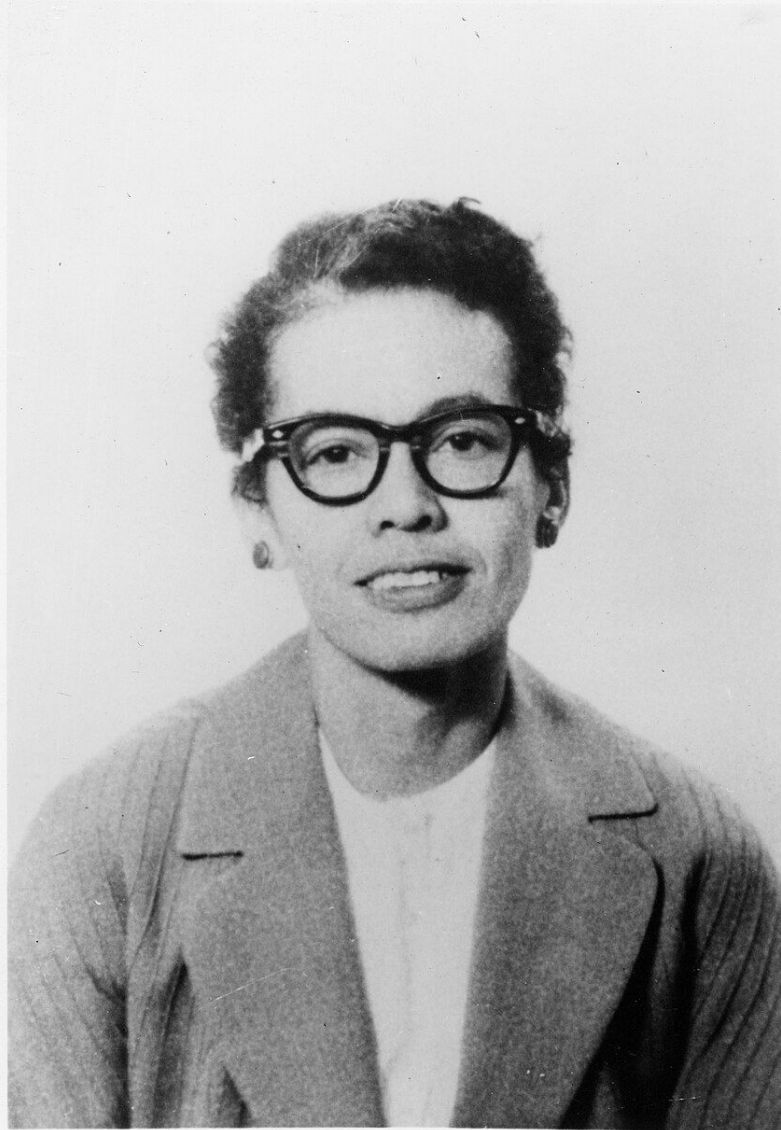


# Pauli Murray

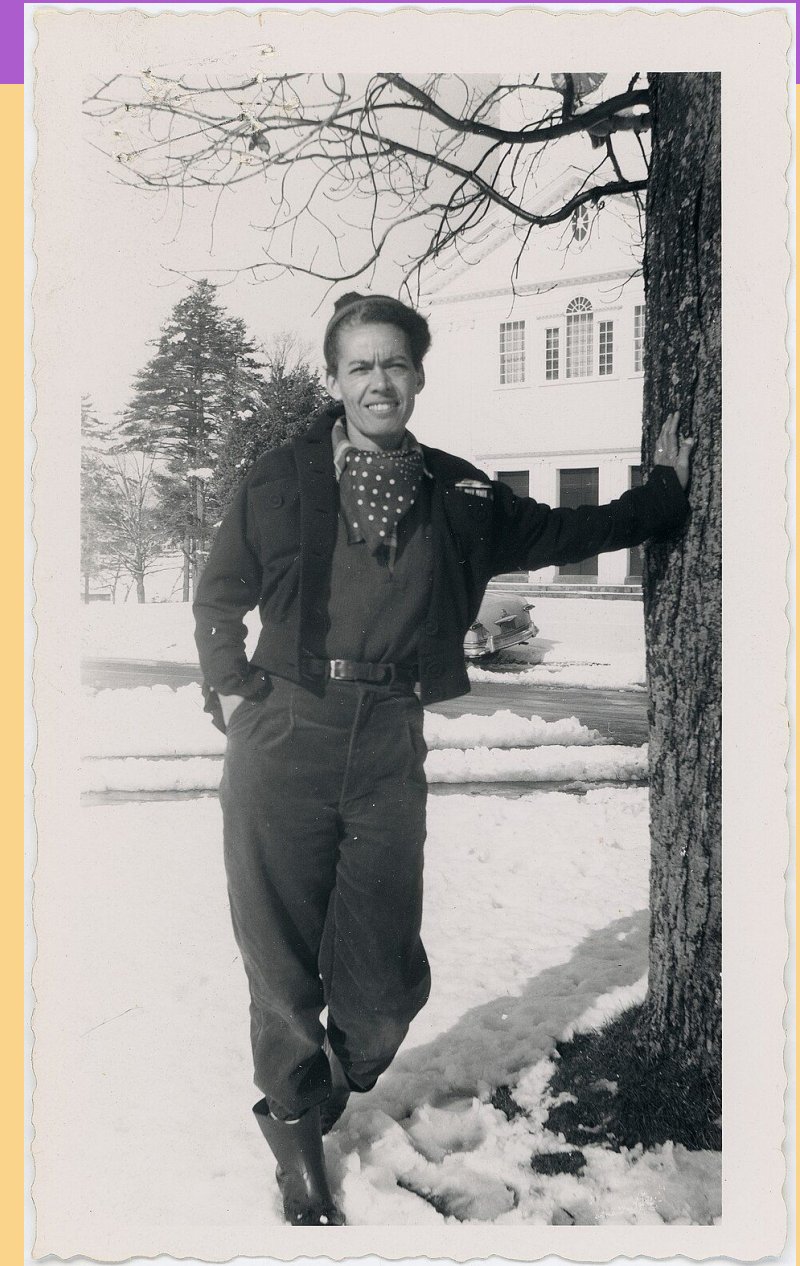
November 20, 1910–July 1, 1985

\*The NWHM follows the guidance from the Pauli Murray Center, which uses both s/he and they/them pronouns when discussing Murray’s life. See the Center’s full explanation at: <https://www.paulimurraycenter.com/pronouns-pauli-murray>





The Episcopal Church sainted Murray in 2012, Yale University named a residential college after Murray, and Murray's childhood home in Durham was designated a National Historic Landmark. Due to Murray's dogged work and courage, s/he is regarded as one of the most important social justice advocates of the twentieth century.



**"One person plus one typewriter constitutes a movement."**

**-Pauli Murray**





"First Lady of the World" Eleanor Roosevelt used her platform as First Lady of the United States and as a member of the wealthy and prominent Roosevelt family to advocate for human and civil rights. She was a prolific author, speaker, and humanitarian, and chaired the United Nations' Human Rights Commission. She connected with the public through a popular syndicated column, 'My Day,' in which she recounted her daily adventures from 1935 until her death in 1962.



# Eleanor Roosevelt

October 11, 1884–November 7, 1962





Eleanor Roosevelt continues to be remembered as one of the most prominent humanitarians of her generation, and is one of five women honored in 2023 by the U.S. Mint's American Women Quarter's Program. Her quarter features her portrait against the scales of justice, symbolizing her work on the Universal Declaration of Human Rights.

Patricia Roberts Harris' life is a powerful chapter in our American story. "I am one of them..." she said at her 1977 hearing to become HUD Secretary....Those words serve as testament to her life and legacy: political pioneer, successful businesswoman, educator, and champion for civil and equal rights. In 1982, following an unsuccessful bid to become mayor of Washington, D.C., Harris became a full-time professor at The George Washington University National Law Center.



# Patricia Roberts Harris

May 31, 1924-March 12, 1985





In January, 2000, the U.S. Postal Service honored Ms. Harris with a commemorative postage stamp bearing her likeness. Dignitaries from around the nation attended the unveiling ceremony at Howard University, her alma mater, to pay tribute and recognize her contribution to the nation. In addition, Howard created the Harris Public Service Program in her honor to augment its course offerings in public policy and to encourage students to consider careers in public service.

Affectionately called “R.B.G.” by her supporters, Ruth Bader Ginsburg has inspired generations of women to break gender barriers. Even after facing gender discrimination as she pursued her academic goals, Ginsburg forged ahead and became the second woman--and first Jewish woman--to serve on the Supreme Court.



# Ruth Bader Ginsburg

March 15, 1933–September 18, 2020



Over her 27 years on the nation's highest court, Ginsburg also became a fashion pioneer, bringing her unique style to the staid judges' robes and subtly encoding meaning in her dress through an ever-growing collection of collars often given to her by colleagues and admirers.



To her, each one developed a special significance. The style of the collar sometimes reflected the substance of her work; perhaps most famously, the liberal Ginsburg often wore a bejeweled collar that looked like armor on days she dissented.

# Vocabulary:

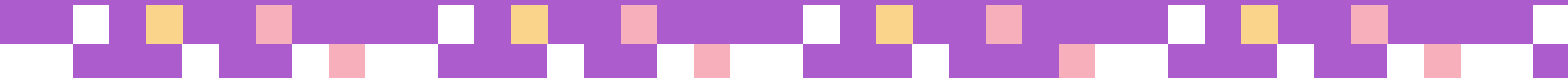
1. Intersectionality
2. Social Justice
3. Social Equity
4. Historical/Collective/Social Memory
5. Civic Engagement/Changemaking
6. Public Policy
7. Social/Legal Reform
8. Primary Source
9. Secondary Source
10. 14th Amendment



**As you rotate through each station:**

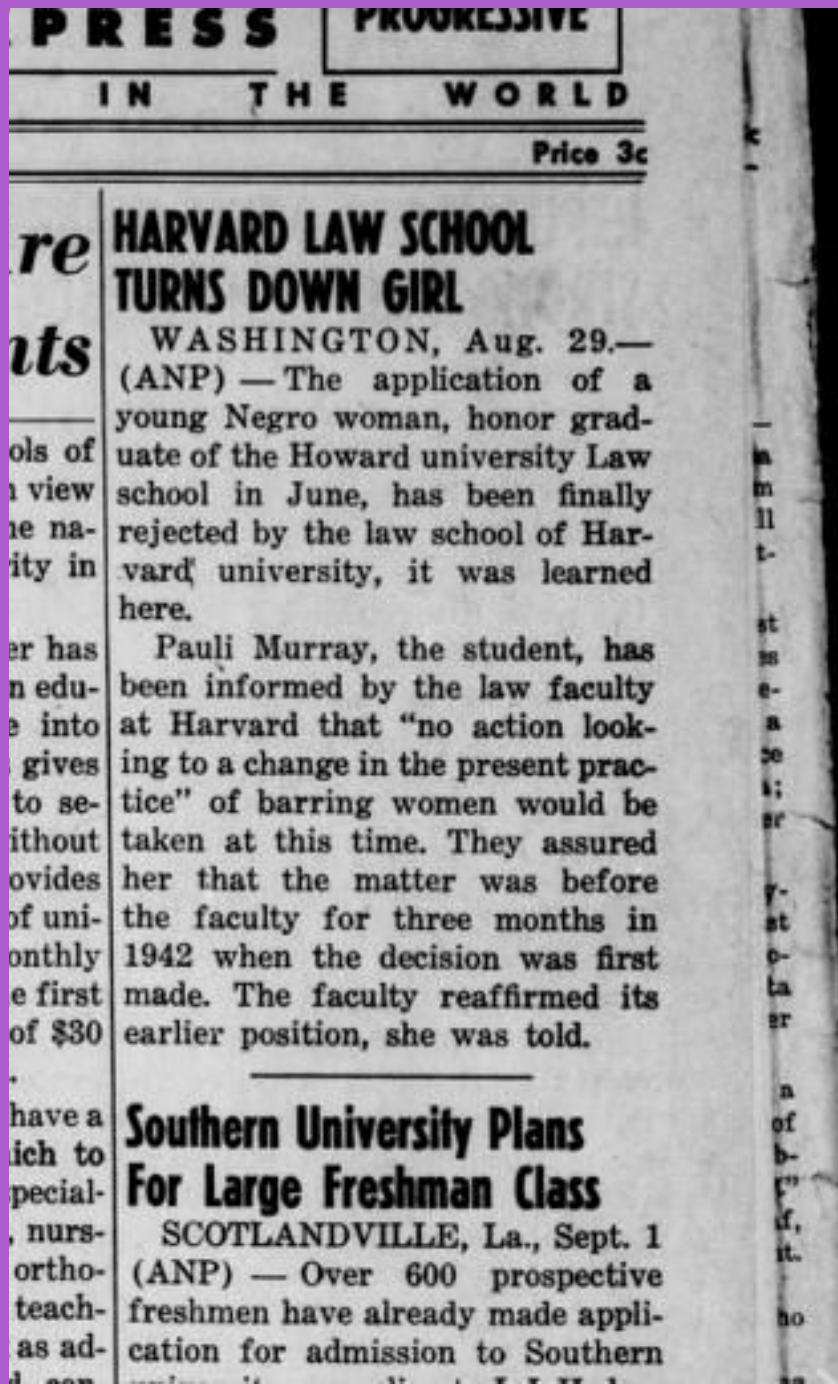
- 1. Read the biography (secondary source).**
- 2. Choose one primary source (if more than one) to read, watch, or listen to.**
- 3. Complete the Primary Source Analysis Tool for your chosen primary source.**
- 4. Answer the following questions for each station:**

- What is the central issue discussed?**
- How does friendship or community appear in the biography/primary source?**
- What civic strategies are used or implied?**



# EXAMPLE: Pauli Murray

## Primary Source



NAME:

PRIMARY SOURCE ANALYSIS TOOL

OBSERVE

REFLECT

QUESTION

FURTHER INVESTIGATION:

ADDITIONAL NOTES:

LIBRARY

LOC.gov/teachers



# CITATIONS

"A Higher Standard: Patricia Roberts Harris." National Museum of African American History and Culture, 1 June 2025, [nmaahc.si.edu/explore/stories/higher-standard-patricia-roberts-harris](https://nmaahc.si.edu/explore/stories/higher-standard-patricia-roberts-harris).

Alexander, Kerri Lee. "Ruth Bader Ginsburg." National Women's History Museum, 2020.

Berenson, Tessa, and Elinor Carucci . "Portraits of Ruth Bader Ginsburg's Favorite Collars and the Stories Behind Them." Time, 3 Dec. 2020, [time.com/5914834/ruth-bader-ginsburg-collars/](https://time.com/5914834/ruth-bader-ginsburg-collars/).

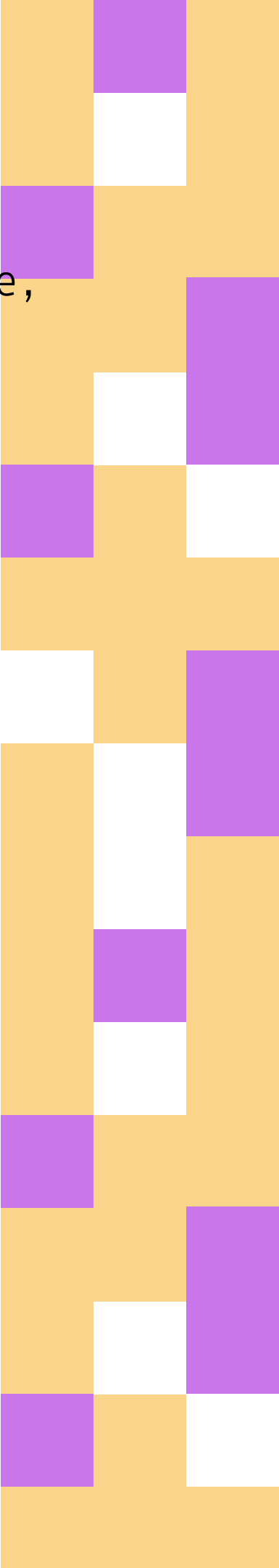
Carolina Digital Library and Archives. "Murray, Pauli, 1910-1985." 5 July 2007. Online image. UNC University Library.

"Eleanor Roosevelt." *National Archives and Records Administration*, National Archives and Records Administration, [catalog.archives.gov/id/196529](https://catalog.archives.gov/id/196529).

"Justice Ruth Bader Ginsburg." *The Supreme Court Historical Society Timeline of the Court Justice Ruth Bader Ginsburg*, [web.archive.org/web/20200428233849/https://www.supremecourthistory.org/history-of-the-court/the-current-court/justice-ruth-bader-ginsburg/](https://www.supremecourthistory.org/history-of-the-court/the-current-court/justice-ruth-bader-ginsburg/).

Michals, Debra. "Eleanor Roosevelt." National Women's History Museum, 2017.

Rothberg, Emma. "Pauli Murray." National Women's History Museum, 2021.



# Virtual STATION ROTATION





# Pauli Murray

**Secondary Source:**  
Biography

**Primary Sources:**

Evening Star, 1963

The Michigan Chronicle, 1944

(AUDIO) Interview, Southern Oral  
History Program, 1976\*

(TRANSCRIPT) Interview, Southern Oral  
History Program, 1976\*

\*Choose a section to listen to or read





# Eleanor Roosevelt

## Secondary Sources:

### Biography

Author and professor emerita of Women's Studies at UGA, Patricia Bell-Scott, on the friendship between Eleanor Roosevelt and Pauli Murray (time marker beginning at 10:55)

Listen for 5 minutes

## Primary Source:

Pauli Murray Correspondence with Eleanor Roosevelt and FDR, 1938





# Patricia Roberts Harris

Secondary Source:  
Biography

Primary Sources:

Correspondence between Pauli Murray & Patricia Roberts Harris, 1982

(VIDEO) Patricia Roberts Harris  
before Senate Committee, 1977



# Ruth Bader Ginsburg

**Secondary Source:**  
**Biography**

**Primary Source:**

**(VIDEO) Interview with Ruth Bader  
Ginsburg, 2017**





# Digital STATION ROTATION





(AUDIO) Interview,  
Southern Oral History  
Program, 1976\*



(TRANSCRIPT)  
Interview, Southern  
Oral History  
Program, 1976\*

\*Choose a section to listen to or read



# Pauli Murray

## Biography



The Michigan  
Chronicle, 1944



Evening Star, 1963



Primary Source:



Pauli Murray  
Correspondence  
with Eleanor  
Roosevelt and FDR,  
1938

Secondary Source:



Author and professor emerita  
of Women's Studies at UGA,  
Patricia Bell-Scott, on the  
friendship between Eleanor  
Roosevelt and Pauli Murray  
(time marker beginning at  
10:55) Listen for 5 minutes



# Eleanor Roosevelt

## Biography





Correspondence  
between Pauli  
Murray &  
Patricia  
Roberts  
Harris, 1982



(VIDEO) Patricia  
Roberts Harris before  
Senate Committee,  
1977



# Patricia Roberts Harris Biography



(VIDEO) Interview with  
Ruth Bader Ginsburg,  
2017

**Ruth Bader Ginsburg  
Biography**

# Printed

# STATION ROTATION





## Read:

- National Women's History Museum Biography
- The Michigan Chronicle, 1944
- Evening Star, 1963

## Listen or Read:



(AUDIO) Interview,  
Southern Oral History  
Program, 1976\*



(TRANSCRIPT)  
Interview, Southern  
Oral History  
Program, 1976\*

\*Choose a section to listen to or read

A grayscale photograph of Pauli Murray, a Black woman with short, curly hair and glasses, wearing a dark jacket over a light-colored shirt. She is sitting at a desk, smiling, and holding a pen over a stack of papers. Bookshelves filled with books are visible in the background.

# Pauli Murray

**Read:**

- **National Women's History Museum Biography**
- **Pauli Murray Correspondence with Eleanor Roosevelt and FDR, 1938**

**Watch:**



Author and professor emerita of Women's Studies at UGA, Patricia Bell-Scott, on the friendship between Eleanor Roosevelt and Pauli Murray (time marker beginning at 10:55)

Listen for 5 minutes

**Eleanor Roosevelt**





**Read:**

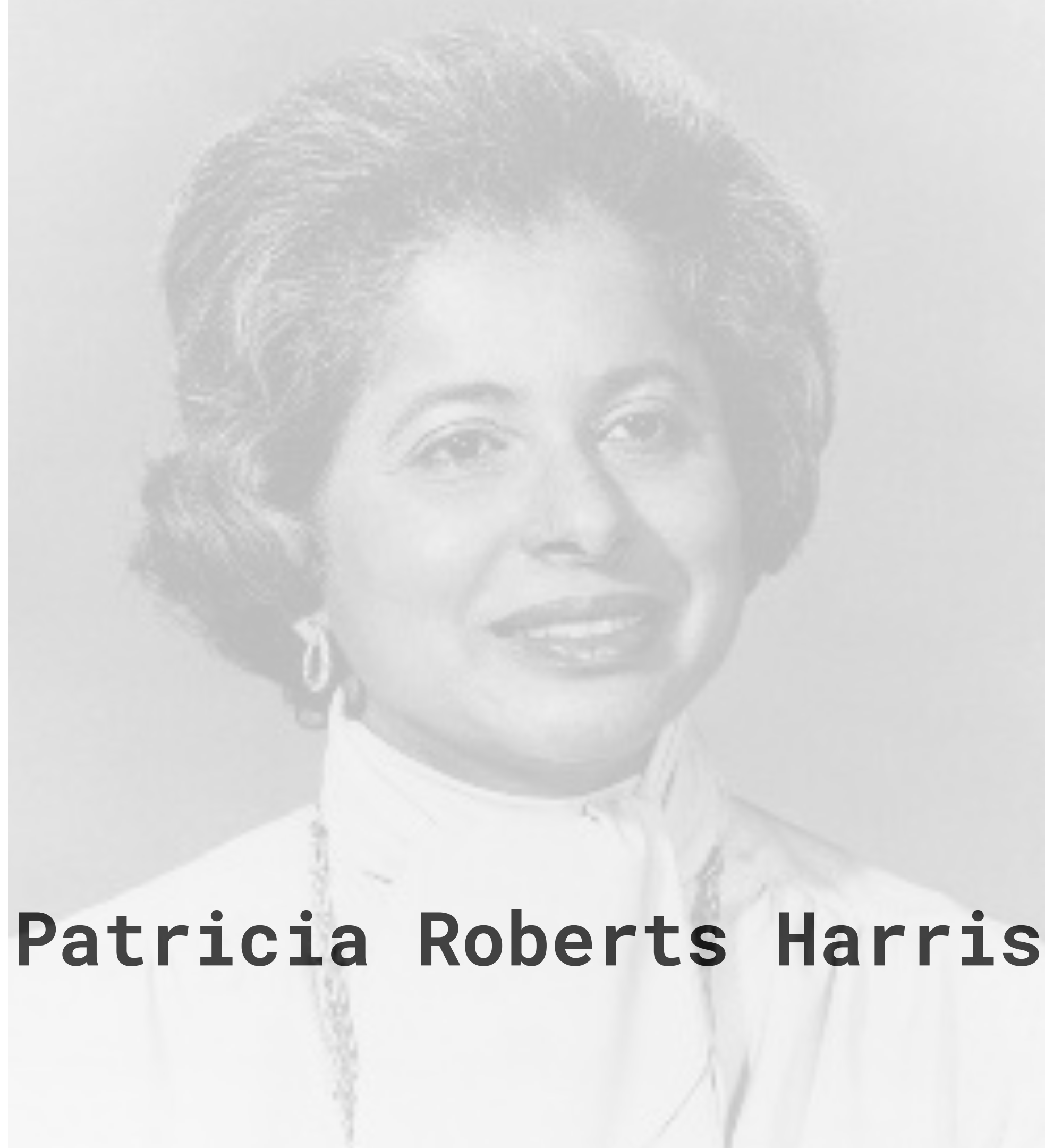
- **National Women's History Museum Biography**
- **Correspondence between Pauli Murray and Patricia Roberts Harris, 1982**

**Watch:**



(VIDEO) Patricia  
Roberts Harris before  
Senate Committee,  
1977

**Patricia Roberts Harris**



**Read:**

- **National Women's History Museum Biography**

**Watch:**



(VIDEO) Interview with  
Ruth Bader Ginsburg,  
2017

**Ruth Bader Ginsburg**





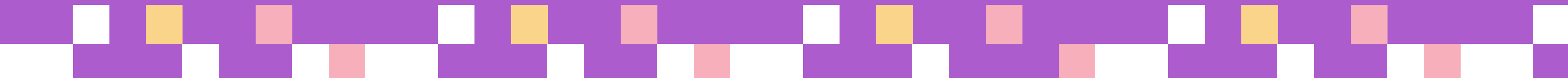
# CIVIC ACTION PORTFOLIO



# What is the Civic Action Portfolio?

You'll create a Civic Action Portfolio that links the civic strategies of Pauli Murray, Patricia Roberts Harris, Ruth Bader Ginsburg, and/or Eleanor Roosevelt to a current issue that matters to you.

Your goal is to use what you've learned to propose real change.





**You'll choose one of the following formats to present your Civic Action Portfolio:**

- A Canva poster or digital infographic**
- A Google Slides or PowerPoint presentation**

**Make sure your format includes both visual and textual elements.**



# **Your Portfolio must include 5 elements:**

## ***1. Issue Addressed***

- **Identify one specific issue affecting your school, neighborhood, or broader community.**
- **Clearly define what the issue is, where it exists, and who is affected by it.**





## ***2. Why It Matters***

- **Explain the significance of this issue.**
- **Include personal connections, community impact, and relevant data or anecdotes to build urgency and credibility.**



### ***3. Possible Challenges***

- **Anticipate barriers that could prevent change, such as social, political, economic, institutional, or interpersonal.**
  - **Consider how privilege, access, or systemic structures may impact progress.**
  - **Reflect on how changemakers like Murray or Harris faced and overcame similar challenges.**





## ***4. Proposed Actions Inspired by Historical Strategies***

- **Directly link one part of your plan to a strategy used by Murray, Harris, Ginsburg, or Roosevelt. For example: Murray's writing, Harris's involvement in government leadership, Ginsburg's groundbreaking constitutional arguments, or Roosevelt's public speaking and coalition-building tactics.**



## ***5. Potential Allies, Collaborators, or Networks***

- **Identify at least two people, groups, or organizations that could support your efforts.**
- **Explain why they are essential and how you would approach them with your concerns and ideas for change.**

